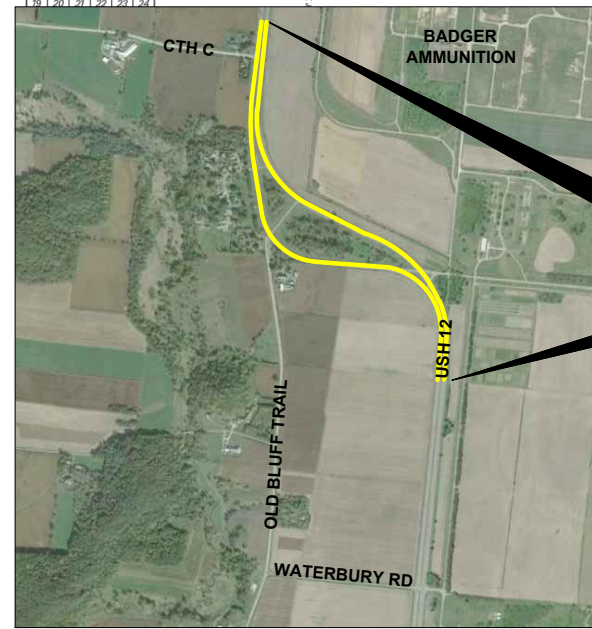




REGIONS

SECTION NUMBERING OF A TOWNSHIP

6	5	4	3	2	1
7	8	9	10	11	12
18	17	16	15	14	13
24	23	22	21	20	19



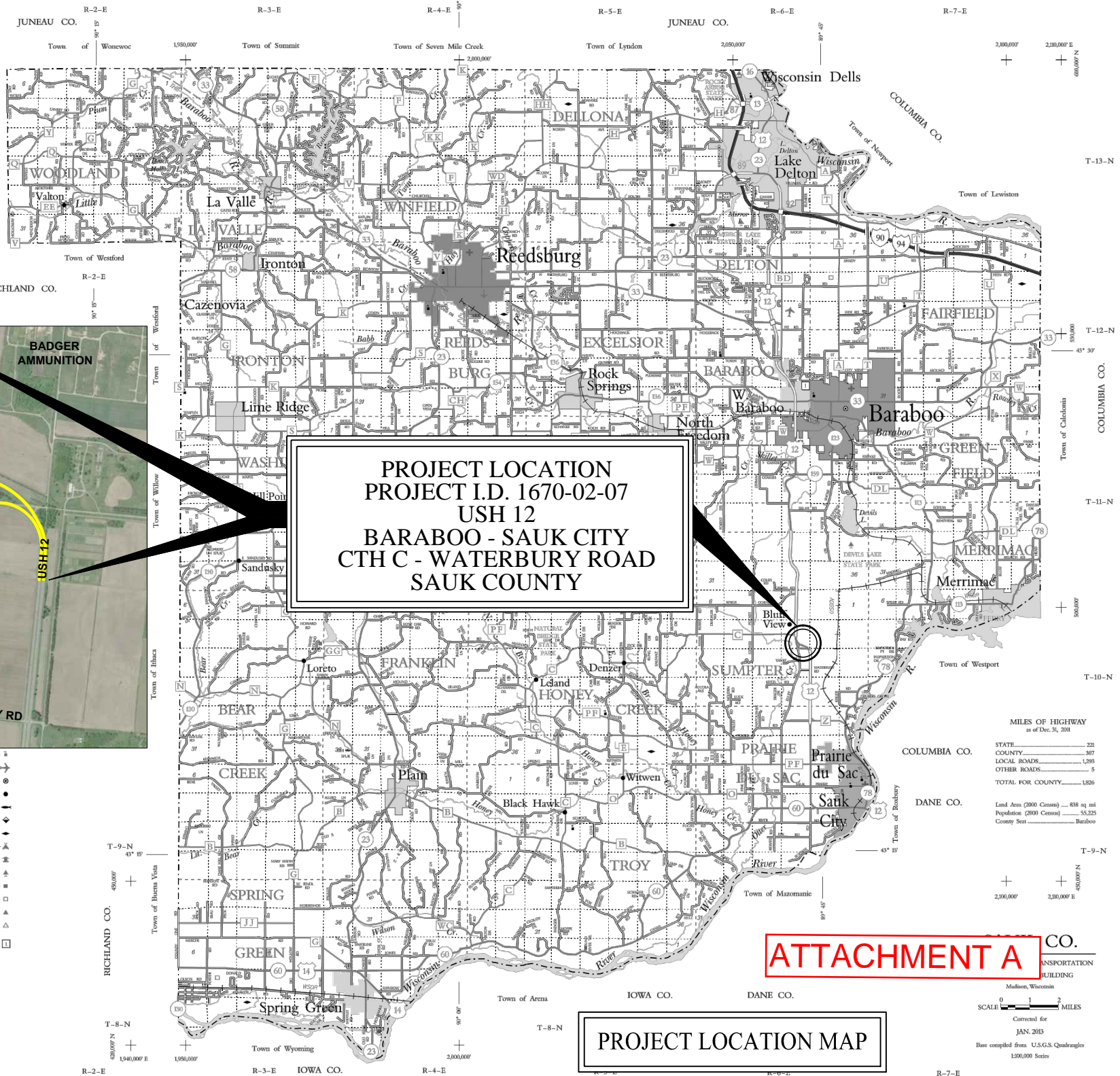
**PROJECT LOCATION**  
**PROJECT I.D. 1670-02-07**  
**USH 12**  
**BARABOO - SAUK CITY**  
**CTH C - WATERBURY ROAD**  
**SAUK COUNTY**

- U.S. or State Hwy
- County Trunk Hwy
- Town Road
- Firelane
- Railroad
- State Trail
- Interchange
- Highway Separation
- Interstate Highway No.
- U.S. Highway No.
- State Highway No.
- County Highway Letter
- State Boundary
- County Boundary
- Civil Town Boundary
- Section Line

- Schools
- Airport
- County Seat
- Unincorporated Village
- Fish Hatchery
- Game Farm
- Public Hunt. or Fish. Grds.
- Public Camp & Picnic Grds.
- Ranger Station
- County Park
- Rest Area
- Wayside
- Units of Wisconsin

For boundaries of public hunting and fishing grounds please contact the Department of Natural Resources

Grid based on the state plane coordinate system south zone and the NAD 27



MILES OF HIGHWAY as of Dec. 31, 2018

STATE	221
COUNTY	307
LOCAL ROADS	1,293
OTHER ROADS	5
TOTAL FOR COUNTY	1,826

Land Area (2000 Census) - 838 sq mi  
 Population (2000 Census) - 53,225  
 County Seat - Baraboo

**ATTACHMENT A**

**PROJECT LOCATION MAP**

SCALE 0 1 2 MILES

Corrected for JAN. 2013

Base compiled from U.S.G.S. Quadrangles 1:50,000 Series